

4.1–4.3 Quiz

Write the fraction as a percent. (Section 4.1)

1. $\frac{3}{20}$

2. $\frac{11}{8}$

3. $\frac{1}{16}$

Write the percent as a decimal. (Section 4.2)

4. 34%

5. 0.12%

6. 62.5%

Write the decimal as a percent. (Section 4.2)

7. 0.67

8. 5.35

9. 0.685

Tell which number is greater. (Section 4.3)

10. $\frac{11}{15}$, 74%

11. 3%, 0.3

Use a number line to order the numbers from least to greatest. (Section 4.3)

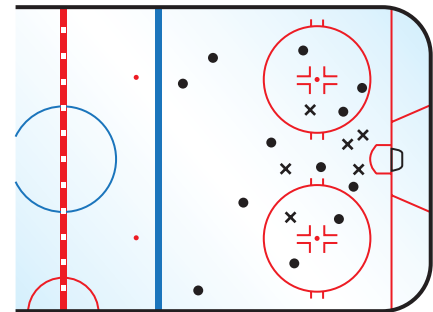
12. 125%, $\frac{6}{5}$, 1.22

13. 42%, 0.43, $\frac{17}{40}$

14. **MUSEUMS** Of the museums in the United States, 38% are history museums. What *fraction* of the museums are history museums? (Section 4.1)

15. **ANATOMY** About 62% of the human body is composed of water. Write this percent as a decimal. (Section 4.2)

16. **SAVES** A goalie's saves (•) and goals scored against (×) are shown. Did the goalie save at least 65% of the shots on goal? Explain. (Section 4.3)



17. **SCAVENGER HUNT** The table shows the results of 8 teams competing in a scavenger hunt. (Section 4.3)

Team	1	2	3	4	5	6	7	8
Portion Collected	$\frac{3}{4}$	0.8	77.5%	0.825	$\frac{29}{40}$	76.25%	$\frac{63}{80}$	81.25%

- Order the teams by portion collected from least to greatest.
- The top three teams move on to the final round. Which teams are in the final round?